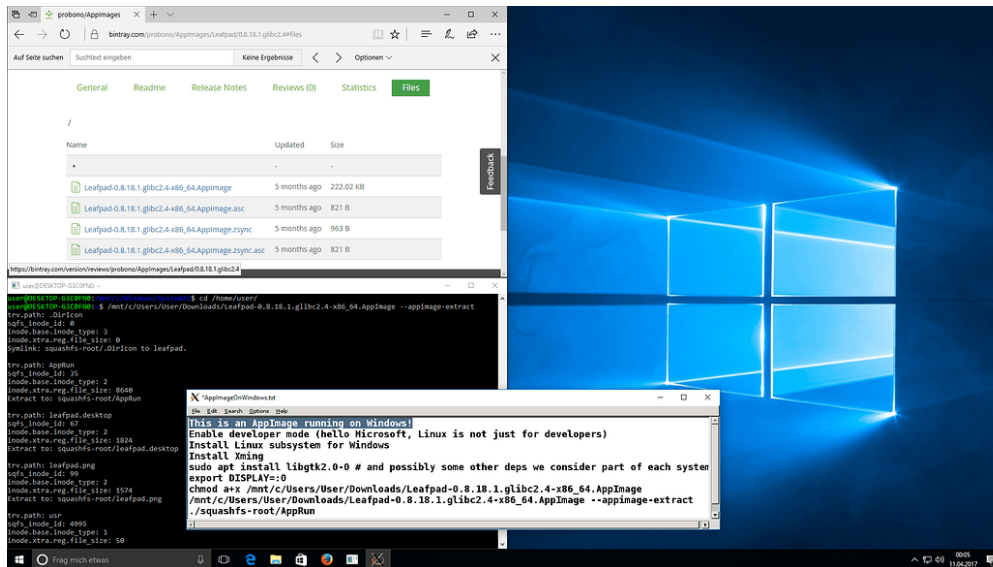


Run AppImage on Windows

probono

Apr '17

Windows 10 includes the Windows Subsystem for Linux (WSL), also known as “Bash for Windows”. This can be used to run AppImages on Windows.



Microsoft has made it a bit harder than double-clicking a file, though:

1. Enable developer mode (hello Microsoft, Linux is not just for developers)
2. Install Windows Subsystem for Linux
3. Install Xming (or another X Windows Server that runs on Windows) and launch it
4. `sudo apt install libgtk2.0-0` # and possibly some other deps we consider part of each system
5. `export DISPLAY=:0`
6. `chmod a+x /mnt/c/Users/User/Downloads/Leafpad-0.8.18.1.glibc2.4-x86_64.AppImage`
7. `/mnt/c/Users/User/Downloads/Leafpad-0.8.18.1.glibc2.4-x86_64.AppImage --appimage-extract` since Windows doesn't support FUSE yet (**vote on it** if you would like to see this change)
8. `./squashfs-root/AppRun`

Vadim_Peretokin

Apr '17

If Linux wasn't just for developers, we wouldn't be telling people to open up a terminal just to run an app they've downloaded. Just saying that the mentality is that it *is* for developers.

Great work on getting this experiment working!

MichaelTunnell

Apr '17

Vadim_Peretokin:

If Linux wasn't just for developers, we wouldn't be telling people to open up a terminal just to run an app they've downloaded.

Yep, but go to <http://appimage.org> and see what it says. To someone who doesn't know otherwise, you do!

MichaelTunnell

Apr '17

Vadim_Peretokin:

Yep, but go to <http://appimage.org> and see what it says. To someone who doesn't know otherwise, you do!

That's a good point. The homepage should explain both options rather than having the GUI solution only on the forum.

[@probono](#) I'd suggest the gif image [here](#) , be placed on the homepage before or beside the command option.

probono

Apr '17

I guess the real issue is that desktop environments don't handle ELF files that are lacking the execute bit not ideally:

<https://github.com/probonopd/AppImageKit/issues/374>

If you care about this, please open an issue ticket with your favorite desktop environment and ask for ELF files that are lacking the execute bit to be handled more gracefully.

deleteaccount1234567

Oct '18

Hello sorry if thread is old. I am new for AppImage - I will learn about AppImage because I am initial for AppImage. That is nice like BoxedApp Packer for Windows - Nice idea.

Hehehe I will ignore to Windows - If you use WSL because Windows has to use BoxedApp Packer or Cameyo

kghodstinat

Apr '20

[@probono](#) I am still getting this error when I call – appimage-extract

fuse: device not found, try 'modprobe fuse' first
Could not mount AppImage

why do you want to run the AppImage on Windows? QGroundControl also has a native Windows version.

In any case, you will also need to install and set up an X server for the AppImage to work on Windows.

The QGroundControl AppImage apparently was made with an old version of the AppImageKit tools, and hence does not support `--appimage-extract` yet.

It is an ISO9660-based (zisofs) "type 1" AppImage. You can extract it e.g., with 7zip:
<http://www.tc4shell.com/en/7zip/iso7z/>

kgodstinat

Apr '20

[@probono](#) , thank you, I installed QgroundControl for windows.